

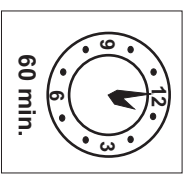
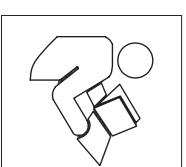
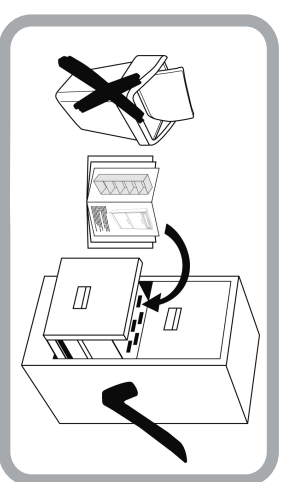
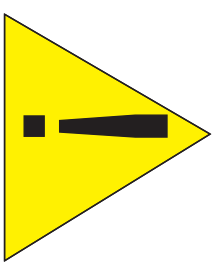
23.01.2018

Modelname / Model name / Nom du modèle / Modelname / Nome modello / Názov modelu / Modelnaam /
Ime modela / Número Modelo / Model neve / Название модели / Názov modelu / Ime modela /
Denuplīge model / Наименование на модела / Nazwa modeli

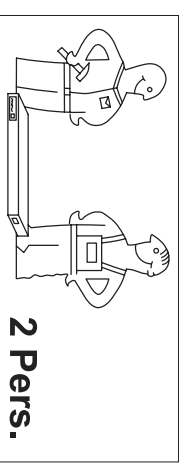
-ATLANTA-

Type / Tipo / Tipus / Typ / Тип / Tip

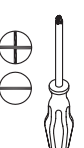
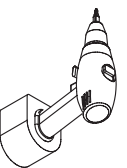
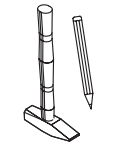
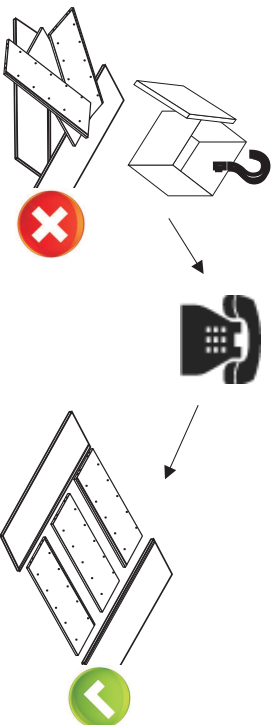
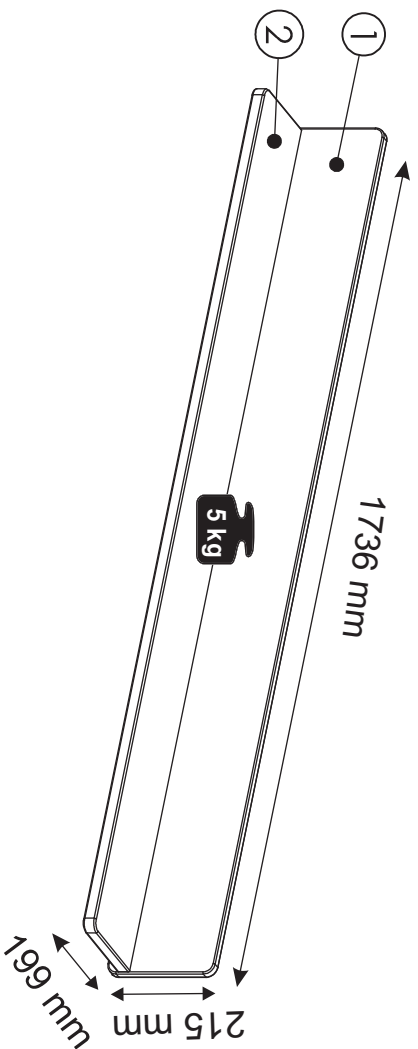
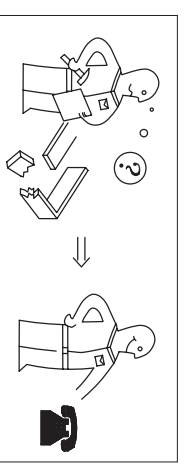
32



60 min.

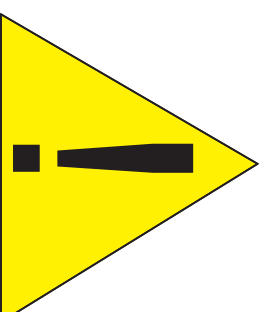
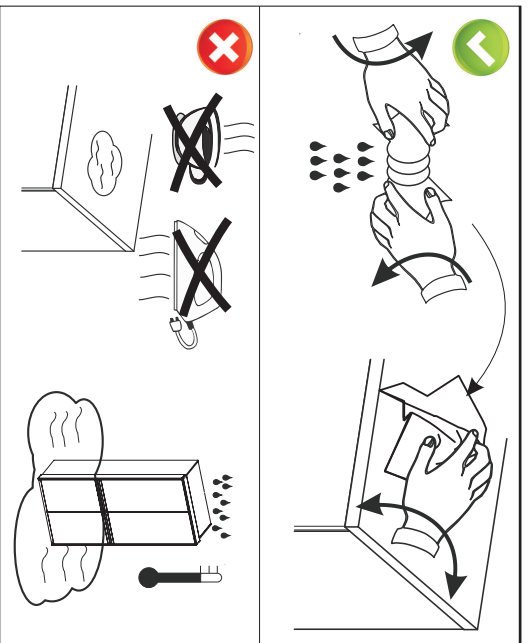
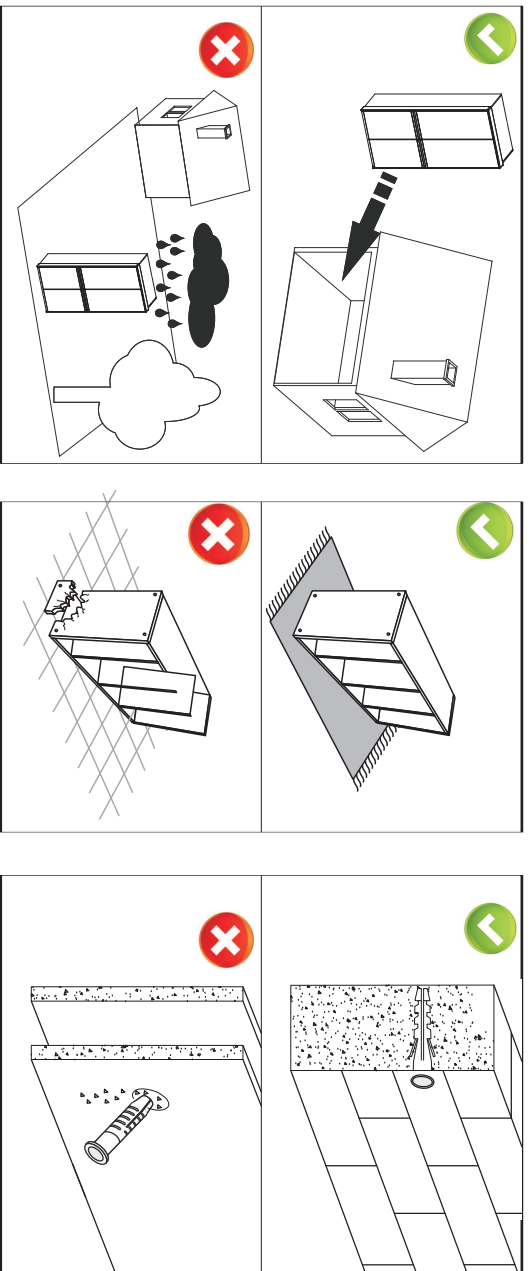
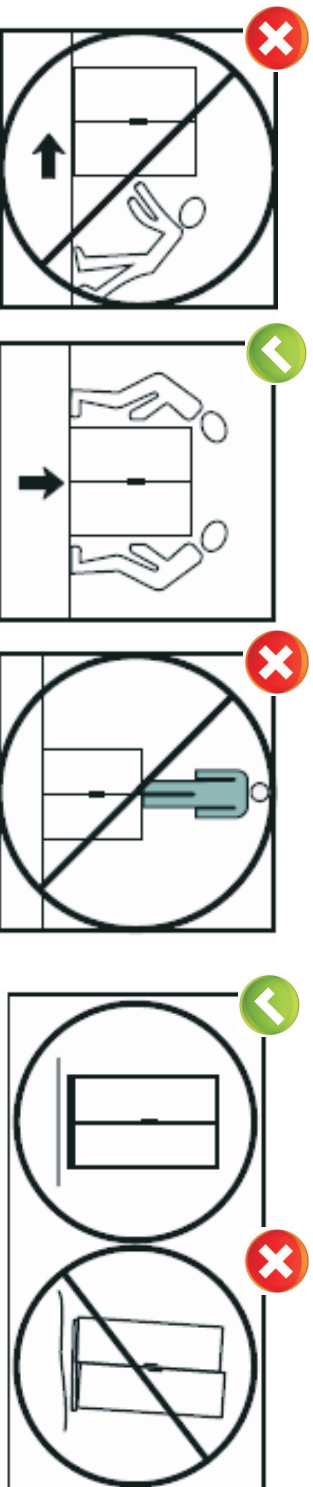



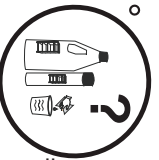

2 Pers.



Modelname / Model name / Nom du modèle / Modelname / Nome modello / Názov modelu / Modelnaam /
Ime modela / Número Modelo / Model neve / Название модели / Názov modelu / Ime modela /
Denpříjme model / Наименование на моделя / Nazwa modelu

-ATLANTA-



 ...
 = 
Tel: +48 601 247 625
Tel: +48 601 677 210
sprzedaz@dekortmeble.pl
www.dekortmeble.pl

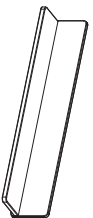
23.01.2018

Modelname / Model name / Nom du modèle / Modelnamn / Nome modello / Názov modelu / Modelnaam /
Ime modela / Número Modelo / Model neve / Название модели / Nazov modelu / Ime modela /
Depljilje model / Наименование на модели / Nazwa modelu

Type / Tipo / Tipus / Typ / Тип / Tip

32

-ATLANTA-



001212



X...

000408



6,3x9,5

X...

B1

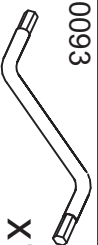


000008

7x50

X7

000093



X1

001655 8x40



X3

000181



X3

D Sehr geehrter Kunde. Wir gratulieren Ihnen zum Erwerb Ihres neuen Möbelstücks.
Da wir auf die Zufriedenheit unserer Kunden viel Wert legen, bitten wir Sie, bevor Sie mit
der Montage beginnen, den Beschlagbeutel sorgfältig zu überprüfen. Sollte ein Teil
fehlen oder beschädigt sein, kreuzen Sie dieses deutlich auf der Montageanleitung an
und schicken uns diese zu

GBDDear Customer: We would like to congratulate you buying a new furniture.
Because we emphasize our customer satisfaction, please check very carefully
the bag with fittings before you start assembling. If some parts are missing
or are broken please mark it with „X“ sign on assembly instruction and send it to us.

PL Szanowny Kliencie. Gratulujemy zakupu nowego mebla. Ponieważ
kładziemy duży nacisk na zadowolenie naszego Klienta, prosimy
dokładnie sprawdzić torbę z okuciami zanim zaczniecie montować.
Gdyby brakowało jakiejś części lub byłaby uszkodzona proszę to oznaczyć
krzyżykiem na instrukcji montażowej i przesać instrukcję.

